

**FREE** Shuttle bus from Bath city centre, check website for availability.

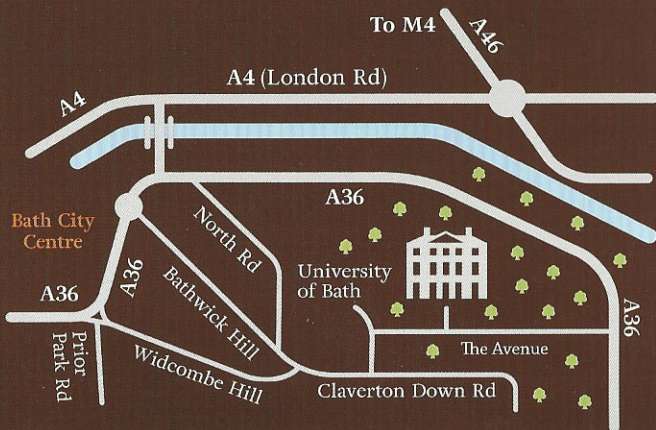
**Main Season**  
18 March – 29 October  
Tues – Sun, 12noon-5pm  
Gardens, café, and exhibition open from 10.30am  
Closed Mondays except during August and Bank Holidays.

**Christmas Season**  
23 November – 17 December  
Tues – Sun, 12noon-4.30pm  
Café open from 11am  
Annual festive display – with a different theme each year – featuring unique handcrafted decorations.

**By Rail/Bus**  
Nearest station is Bath Spa. Take U1 or U18 bus to Bath University (15 min. walk to the Museum).  
Free shuttle bus from city centre.

**By Car**  
The Museum is close to the University of Bath and is signposted from Bath city centre and A36 Warminster Road. Free visitor parking.

**Bookings**  
We welcome schools, groups, private functions, and weddings. For information call 01225 823019 or visit website.



**Admission**  
Museum, Exhibition, & Gardens:  
Adults £12.00  
Over 60s & students £10.50  
Children (5-18 years) £6.50  
Family ticket £28.50

**Gardens only:**  
Adults £7.00  
Over 60s & students £5.50  
Children (5-18 years) £4.50

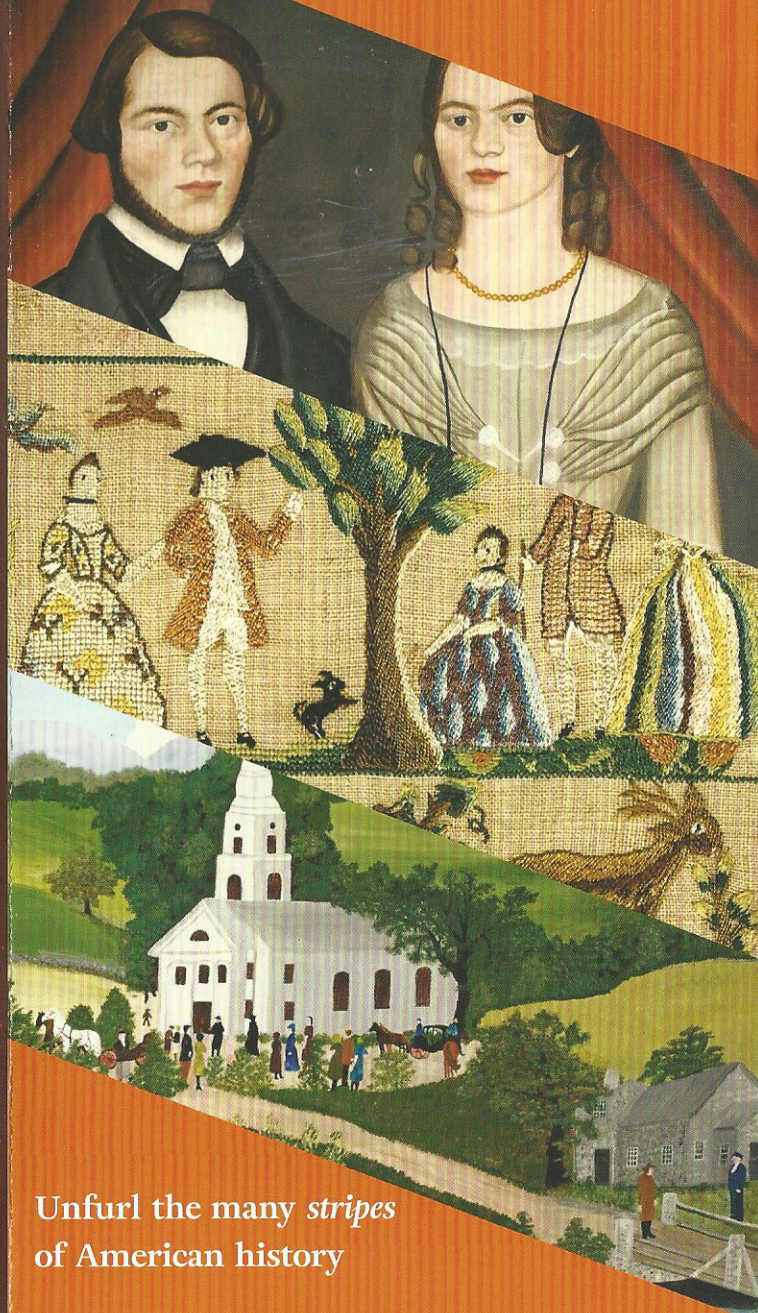
**Well-behaved dogs on leads welcome.**

Claverton Manor  
Bath  
BA2 7BD  
Tel: 01225 460503  
enquiries@americanmuseum.org  
Find us on   

www.americanmuseum.org

Design: sherrindunson.com

# AMERICAN MUSEUM IN BRITAIN



Unfurl the many stripes  
of American history

Delve into collections that reflect the richness of American history and discover an internationally renowned collection of colourful quilts, delightful American folk art, and Native American artefacts.

We offer a warm welcome, terrace café with spectacular views across unspoilt countryside, family activities, free onsite parking, and an exciting programme of events throughout the year.

For those seeking *life, liberty, and the pursuit of happiness*, find the finest collection of American decorative arts outside the United States, displayed in unique Period Rooms which tell the story of early American life.



Exhibitions (18 March - 29 October)  
1920's Jazz Age: Fashion and Photographs  
Joyce Petschek: Breaking the Pattern