



CELEBRATING A WONDERFUL

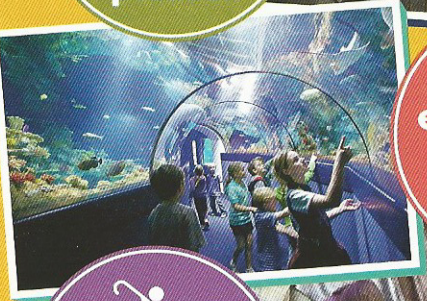


YEARS AT BRISTOL AQUARIUM!

Tickets valid all day - come and go as you please!



Regular events with hands on activities!



Wheelchair and pushchair friendly.



VISIT US TODAY

Open daily from 10am
Kids under 3 go FREE!



BUY ONLINE AND SAVE

Bristol Aquarium, Anchor Road, Harbourside, Bristol, BS1 5TT

Located in the heart of the city we are easy to reach:

By Train 🚆

The closest station is Bristol Temple Meads. We are a 20min walk or 10min bus ride.

By Car 🚗

Follow signs to City Centre/Harbourside. Closest public car park is Millennium Square on Anchor Road. For Sat Nav follow BS1 5LL.

By Bus 🚌

Plan your journey via Traveline, First Group or Park & Ride. Closest bus stops are Anchor Road, College Green and City Centre.

By Bicycle 🚲

Bicycle racks can be found outside the front entrance of the Aquarium.

0117 929 8929

www.bristolaquarium.co.uk

Visit our website for more information



Join us for some fishy fun online:



All details are correct at the time of print (March 2019). All creatures and events are subject to change.

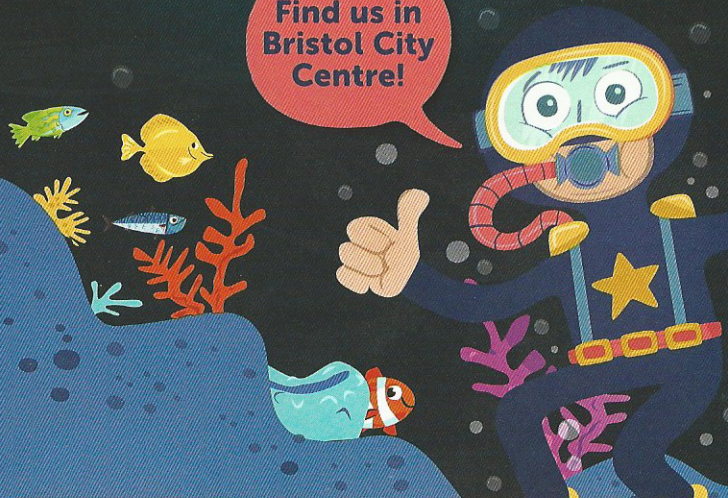
BRISTOL AQUARIUM



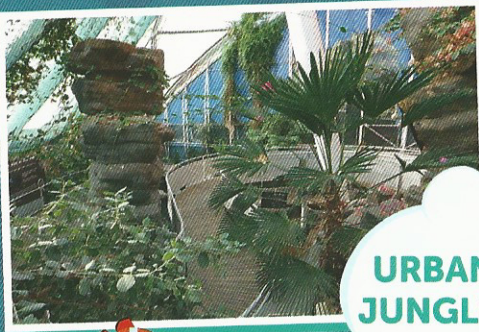
WHERE THE WONDERS OF THE DEEP AWAIT...



Find us in Bristol City Centre!



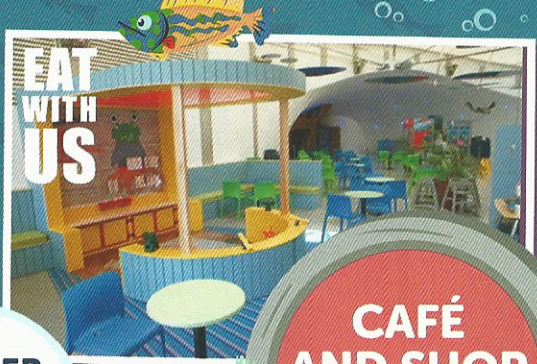
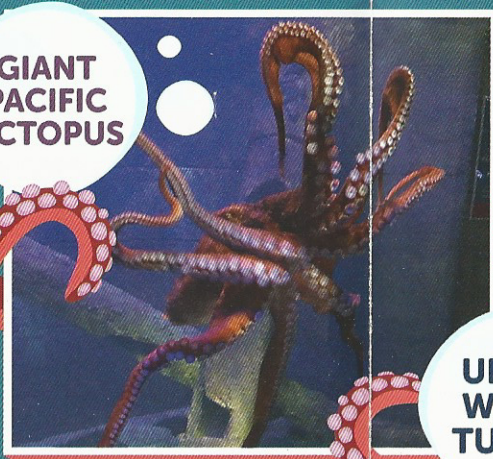
www.bristolaquarium.co.uk



URBAN JUNGLE!



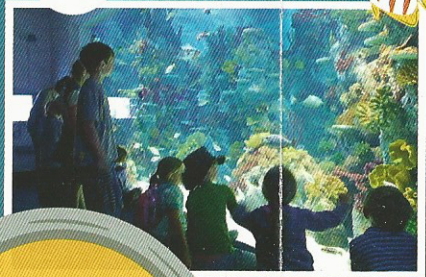
GIANT PACIFIC OCTOPUS



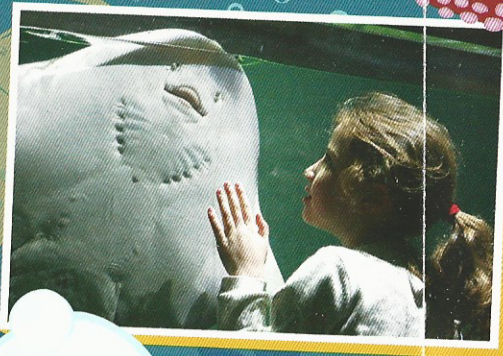
EAT WITH US

CAFÉ AND SHOP OPEN TO ALL

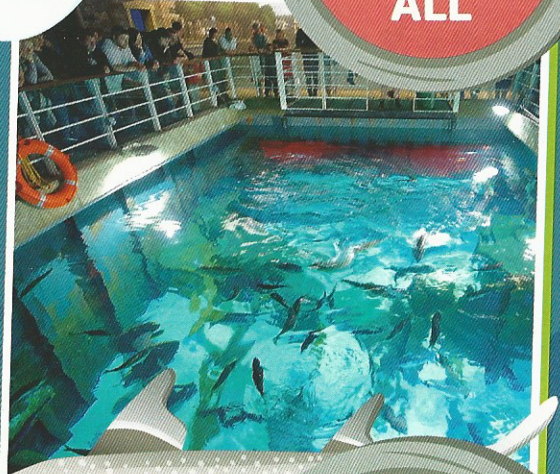
UNDER WATER TUNNEL



JAWSOME BIRTHDAY PARTIES!

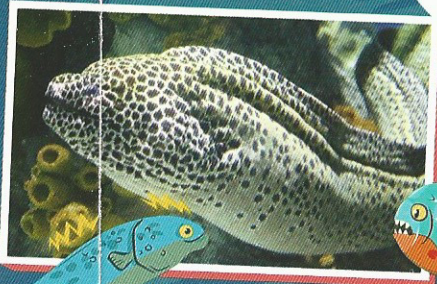


DAILY TALKS & FEEDS



THE PERFECT DAY OUT FOR YOUR CLASS!

ARE YOU READY TO DIVE INTO THE DEEP END AND COME FACE-TO-FIN WITH SOME OF THE MOST WONDERFUL CREATURES IN OUR OCEANS?



ALL WEATHER FUN!

