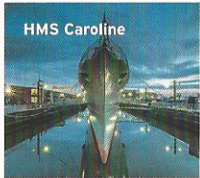


# A TICKET WITH YOU IN MIND

Find the best value ticket for you

TICKET TYPE	VALID FOR	LOCATIONS
National Membership	One year	Nationwide
Fleet Air Arm Museum	One year	Somerset



**UPGRADE TO OUR NATIONAL MEMBERSHIP AND SEE WHAT THE NATIONAL MUSEUM OF THE ROYAL NAVY HAS TO OFFER.**

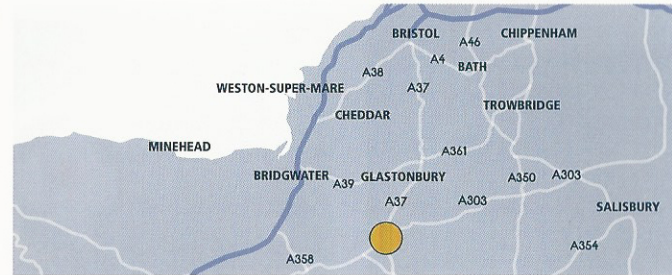
Unlimited entry to Fleet Air Arm Museum Yeovilton	✓
Unlimited entry to The National Museum of the Royal Navy museums and ships at Portsmouth Historic Dockyard, HMS Caroline in Belfast, and The National Museum of the Royal Navy Hartlepool	✓
Friends and family discounts	25%
Guidebook discounts	25%
Food and beverage discounts	10%
Merchandise discounts	10%
Discounts and early bird tickets to selected events	✓
Special tours	✓
Exclusive behind the scenes events	✓
Dedicated members' e-newsletter	✓
Access to exclusive online members' area	✓

# USEFUL INFORMATION

## HOW TO FIND US

### Address:

Fleet Air Arm Museum, RNAS Yeovilton, Ilchester, Somerset, BA22 8HT.



### By road:

The museum is located on the B3151 just off the A303 and A37, 7 miles north of Yeovil. Follow the brown information signs to the Fleet Air Arm Museum. There is plenty of free car parking.

### By train:

Exit at either of the mainline stations at Yeovil and take a taxi (approx. 20 mins).

## OPENING TIMES

**April - October:** Open daily 10 am - 5.30 pm

**November - March:** Open Wednesday - Sunday, 10 am - 4.30 pm and daily during South Somerset school holidays

**Closed:** 24, 25, 26 December

**Access:** All areas of the museum are accessible and suitable for wheelchair users except the fuselage of Concorde and the Merlin Exhibition in Hall 2.

**Facilities:** Adventure playground, licensed cafe, picnic area, museum shop, free car/coach park, disabled access and toilets, private and bespoke tours available (by prior appointment).

## TICKETS & OFFERS

Buy tickets online and save at [fleetairarm.com](http://fleetairarm.com)

### Group and school discounts:

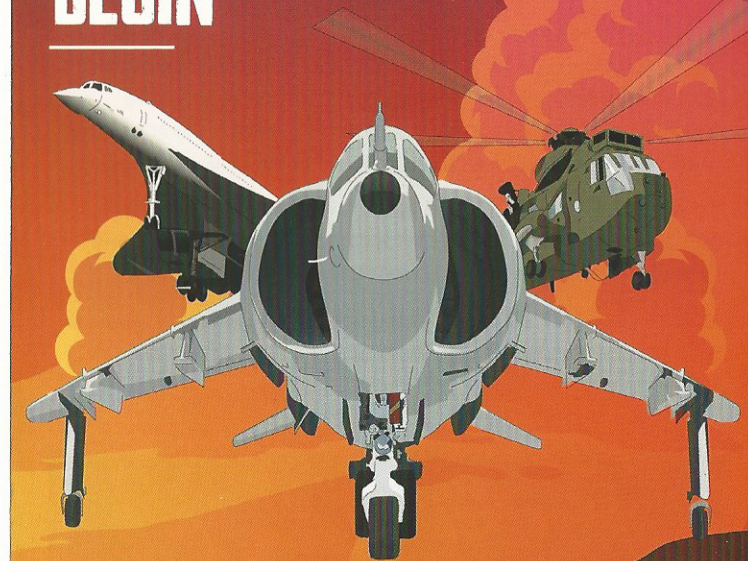
For more information about group and school discounts contact **01935 840565** or [fleetairarm.enquiries@nrmn.org.uk](mailto:fleetairarm.enquiries@nrmn.org.uk)



ROYAL NAVY  
FLEET AIR ARM  
MUSEUM

# PIONEERING NAVAL AVIATION SINCE 1909

## WHERE EPIC ADVENTURES BEGIN



Book online and save 20%  
[fleetairarm.com](http://fleetairarm.com)

THE  
NATIONAL  
MUSEUM



# WELCOME ABOARD



## BE YOU ...PILOT

*"Thoroughly enjoyed our day out, lots to keep me and my 18-month-old entertained. Great displays and the viewing area was great, seeing what was going on out on the airfield. Helpful staff to keep you on track."*

*TripAdvisor Review*

## AIRBORNE ADVENTURE

You decide which aircraft to explore, whether it's the first supersonic British-made **Concorde 002**, the single-seater tractor seaplane **Sopwith Baby**, a **Sea King** Search and Rescue helicopter or the incredible hero of the sky **Sea Vampire MK1** - the first jet aircraft to land on the deck of an aircraft carrier at sea.

Unique, legendary and all with their own story to tell.

## STEP BACK IN TIME

Be wowed by the bravery and fearlessness of the earliest and most significant pilots like record-breaking Captain Eric "Winkle" Brown and learn how Samuel Franklin Cody first sparked the Royal Navy's interest in flight in 1903.

See first-hand the painstaking restoration process of our **Barracuda** in a behind-the-scenes aircraft hangar and pre-book a tour of **Cobham Hall**, which houses our reserve aircraft collection.



## ...ADVENTURER

### TAKE TO THE SKIES

With a range of different activities for all the family, immerse yourself in our impressive **HMS Ark Royal Aircraft Carrier Experience**, where you board a Wessex helicopter and land on the flight deck. Sit back with a coffee and cake whilst the kids let off steam on the carrier-themed outdoor playground.

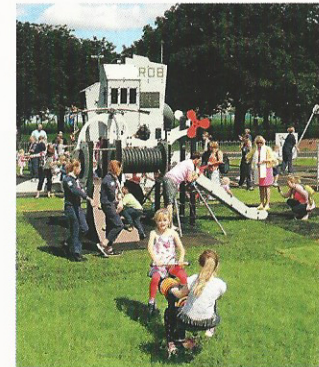
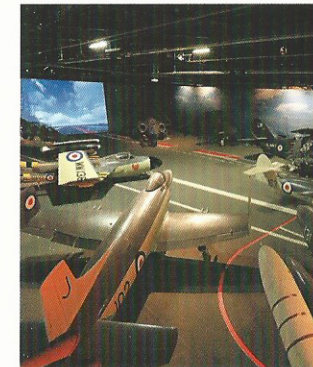
## ...HISTORY LOVER

*"A fascinating history of flight. If you enjoy planes and helicopters, I would highly recommend a visit."*

*TripAdvisor Review*

### HEROES IN FLIGHT

Marvel at the pioneering heroic men and women and their dedication and contribution to naval aviation since 1909. Celebrate the captivating stories of these heroes and experience aviation treasures and special exhibitions all in one unique setting.



## CELEBRATING 50 YEARS

To mark 50 years since **British Concorde 002's** maiden flight, we're proud to put on a special display of the helmet worn by Chief Test Pilot **Brian Trubshaw**, who was the first British pilot to fly Concorde in April 1969. And of course, climb inside the first supersonic British Concorde 002 and experience life at full throttle!

## EUROPE'S LARGEST NAVAL AIRCRAFT COLLECTION

Welcome to the **Fleet Air Arm Museum**, situated in the home of the **Royal Naval Air Station, Yeovilton**.

Journey through the history of naval aviation since 1909. See a selection of 100 aircraft up close in our vast hangars, from the first bi-planes to modern day jets and hear the captivating tales of pioneering men and women, all set in the dramatic backdrop of a modern working airbase.

Be wowed by the sights and sounds of naval aircraft past and present brought to life by our knowledgeable staff and volunteers always keen to share fascinating facts!

*"Chocks Away! This huge, family-friendly museum is packed with jets and helicopters...There is such a lot to see that it would be easy to spend a few hours here."*

*Guardian, 2017*

