



The **Castle Café**
at The MUSEUM of SOMERSET

Making more of your visit

The Castle Café offers a selection of home-made Somerset treats, from soups, sandwiches and salads, to pastries and home-made cakes. Provided by the nearby four star Castle Hotel we use only the best local ingredients and our home-baked bread is made fresh daily. Sit inside or in the beautiful castle courtyard.

The museum shop stocks a range of reasonably-priced toys, cards, books and gifts including the 'Made in Somerset' range of local food and drink.

"Really loved this museum - modern displays housed in a lovely old building."

"Full of amazing displays that will draw you back time and time again."



museumofsomerset.org.uk



Like us on Facebook and follow us on Twitter
@SomersetMuseum Instagram @Somerset_museums

Opening Times

Tuesday to Saturday
10.00 am to 5.00 pm
(last entry 4.30 pm)
Plus Bank Holiday Mondays.
We are closed Christmas Day,
Boxing Day, New Year's Day
and four days in January.

FREE ENTRY

Access

Most parts of the museum are fully accessible, with lifts, disabled toilets and free wheelchair loan. We have one disabled parking space (booking required). Please contact us if you require assistance in accessing the museum.

Contact

The Museum of Somerset,
Taunton Castle, Castle Green,
Taunton, Somerset TA1 4AA

01823 255088

museumofsomerset@swheritage.org.uk



The Museum of Somerset is part of the South West Heritage Trust, an independent charity committed to protecting and celebrating Somerset and Devon's rich heritage. As well as the widely-praised Museum of Somerset and Somerset Rural Life Museum in Glastonbury, the Trust manages state-of-the-art facilities in Taunton and Exeter to care for the extraordinary archive collections of the two counties. The Trust also provides essential advice about the historic environment and manages historic sites. Become a South West Heritage Trust Supporter today and help protect and celebrate the region's rich history, its people, places and stories. Join at swheritage.org.uk.



South West Heritage Trust is a charity and a company limited by guarantee registered in England. Registered office: Somerset Heritage Centre, Brunel Way, Norton Fitzwarren, Taunton, Somerset, TA2 6SF. Company number: 09053532 Charity Number: 1158791
VAT Registration Number: 197221592.

Venue Hire and Group Visits

From the magnificent Great Hall to the intimate surrounds of Castle House this unique venue is the perfect setting for corporate and social occasions.

We also offer gallery and castle tours to groups and societies.

How to Find Us

By car leave M5 at Junction 25. Follow directions to town centre. The nearest public car parks are Tanger and the Crescent.

The museum is just 50 metres from Taunton Bus Station and a 15 minute walk from Taunton Railway Station.

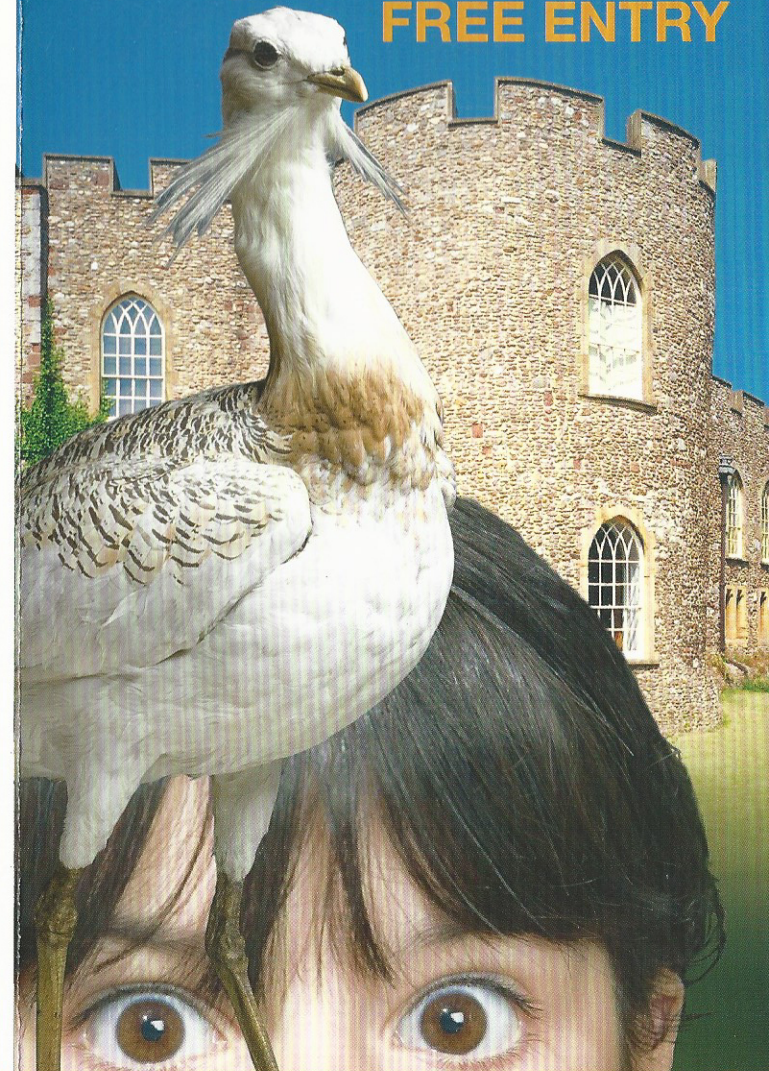
A bicycle rack is provided in the castle courtyard.

Discover

The MUSEUM of SOMERSET

400 million years of history

FREE ENTRY



museumofsomerset.org.uk





Housed in Taunton's historic castle

the Museum of Somerset tells the county's fascinating story from prehistoric times to the present day. Within the 12th-century castle walls you'll find contemporary gallery spaces and great family visitor facilities, all situated close to the vibrant town centre.

What's on?

There's always something going on for families with activities and family fun days throughout the year.

February & October half term Get set for the school hols at our family fun days on the first Sunday of half term

Easter Complete our egg-cellent Easter Trail to receive your chocolate egg!

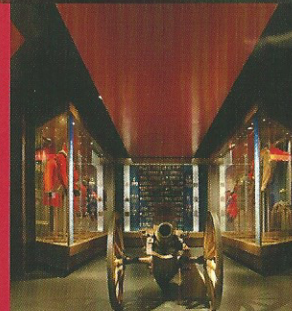
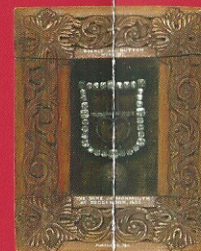
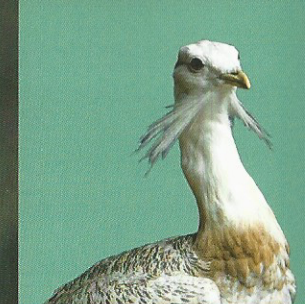
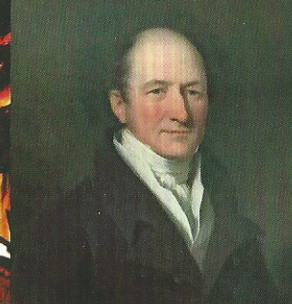
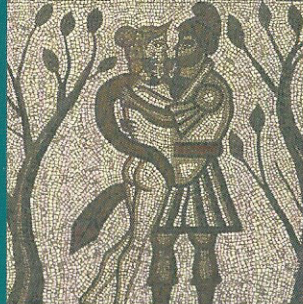
Summer Whatever the weather you'll find something for everyone at our family-friendly summer exhibition and events

Halloween Explore the museum on the spookiest night of the year – dress up if you dare!

Christmas Visit Santa in his grotto every Saturday in December

Toddler Explorers – first Friday of the month

Entry is free but donations to support the work of the museum are welcome. There may be a charge for some activities, events or exhibitions.



Look out for family fun activities as you explore the museum

'Must see'

exhibits from our nine themed galleries

Foundation Stones

See the skull of the Banwell bear, an 80,000 year old Ice Age hunter-killer found in the Mendip bone caves.

Claiming the Land

The Low Ham Roman mosaic depicts the tragic love story of Dido and Aeneas. Made during the 4th century AD, the mosaic is the oldest object in Britain to tell a complete story.

Making Somerset

Watch out for the largest collection of English 17th century cauldrons and skillets in existence....they're hanging from the ceiling!

Reflecting

This room for reflection and inspiration includes a portrait of Tom Poole, tanner, farmer and friend of the poet Samuel Taylor Coleridge.

Discovering

'Discovering' is home to the world's heaviest flying bird. The last Great Bustard was seen flying over the Somerset Levels in the 1870s. It was long extinct in Britain but has recently been reintroduced.

Going Places

The boneshaker bicycle was made in 1866 for Mr Frampton May of Bridgwater enabling him to travel four times faster than on foot.

Gathering

The giant's shoes were worn by Joseph Sewell who was 2.2 metres tall and weighed 235 kilograms.

Rebellion

Monmouth reputedly gave his shoe buckle to a child when he stopped to change horses during his escape from the Battle of Sedgemoor in 1685.

Somerset Military Museum

The museum also houses Somerset Military Museum which tells the story of the regiments connected with the county over more than 300 years.