

Fancy a holiday with a difference?

When you stay in a National Trust holiday cottage, the money you pay goes directly to help us look after the beautiful landscapes around you – whether it's cleaning the beaches, repairing footpaths and hedges, protecting wildlife or conserving historic buildings.

There are more than 180 unique cottages to choose from in the South West, from romantic boltholes to fabulous historic houses for special family celebrations. Search online at nationaltrustholidays.org.uk or request a brochure on 0344 800 2070.



Lower House on the Holnicote estate, Exmoor (dogs stay for free)

Become a member today and help look after places you love

As a member of the National Trust, you can enjoy hundreds of historic places and green spaces as often as you like – for free – and know that you are helping to fund vital conservation work. **Join from just £5.75 a month.**

Ask any member of Trust staff you come across, call **0344 800 1895** or go to nationaltrust.org.uk to find out more.

If you would like this information in an alternative format, please call us on **01392 881691** or email sw.customerenquiries@nationaltrust.org.uk

Photography: National Trust Images/
John Millar, Chris Lacey, Arnhel de Serra, Peter Hall, Mike Selby, Nadia Mackenzie, Alana Wright, Ellen Rooney, Charlie Waite, James Dobson, James Aitken, Dawn Biggs, Trevor Hart, John Miller, Elaine Hodgson.

Front cover photo: Door locks at Dyrham Park, Gloucestershire. (National Trust Images/Chris Lacey).

Every effort has been made to credit the images included in the guide but the National Trust cannot accept responsibility for omissions.

Please recycle this guide or pass it on to a friend. It's been printed on paper from sustainable forests by Eclipse Colour, and designed by Gendall. ©National Trust 2019. Registered charity no. 205846



National
Trust

Somerset, Bath & Bristol

Your map and guide



2019

Somerset, Bath & Bristol

- | | |
|------------------------|---------------------------------|
| 1. Dunster Castle | 13. Brean Down |
| 2. Holnicote estate | 14. Tyntesfield |
| 3. Arlington Court | 15. Leigh Woods |
| 4. Coleridge Cottage | 16. Clevedon Court |
| 5. Fyne Court | 17. Prior Park Landscape Garden |
| 6. Wellington Monument | 18. Dyrham Park |
| 7. Montacute House | 19. Bath Skyline |
| 8. Barrington Court | 20. Westwood Manor |
| 9. Tintinhull Garden | 21. Great Chalfield Manor |
| 10. Lytes Cary Manor | 22. The Courts Garden |
| 11. Cheddar Gorge | 23. Lacock |
| 12. Sand Point | 24. Stourhead |



In this guide



As a simple guide, we've given you the single adult price throughout, but the general rule is: under 5s are free, under 17s half-price, and family tickets are available. There may be parking charges at some places. For full details, call or go online. **Remember that entry is FREE for members. See back cover for how to join.**



Where dogs are welcome, please keep them under control (in many places this will mean on short leads) and take note of local signs and restrictions.



All of the places in this guide, and many more, are looked after by the **National Trust** – a conservation charity set up 120 years ago to protect *for ever* the places that people love. You can support the Trust's work by becoming a member – **see back cover.**

1

Dunster Castle

All the drama of a mighty Norman fortress built high on a hill, which evolved through the centuries into a sumptuous Victorian home.

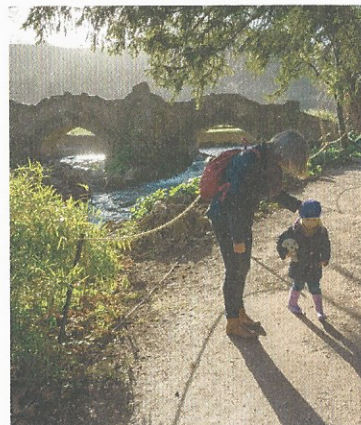


Don't miss

- Playing snooker in the Billiard Room, or relaxing with a newspaper in the Morning Room

- The rare leather hangings (see detail, right) said to be the largest and most complete in the world

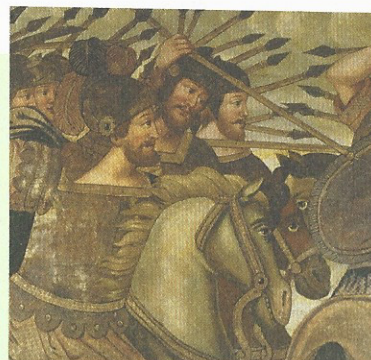
- The working watermill nearby, where there's a tea-room and you can buy the mill's own stoneground flour



Lunch or munch Light refreshments at the castle, and picnics welcome. Riverside tea-room nearby at Dunster Working Watermill. Cafés and pubs in the picturesque village of Dunster.

Young explorers Log play area in wooded garden, lawn games and family activities.

Walkies? Dogs are welcome in the parkland, garden and all buildings except the castle and tea-room.



📍 Nr Minehead, Somerset TA24 6SL
☎ 01643 821314

Price guide £13.60

Open days Every day, all year except 24-25 Dec. Call or go online for times and full details.

2 Holnicote estate

A huge rural estate of classic and timeless Exmoor landscapes, which you can explore on over 150 miles of footpaths and bridleways.



Don't miss

- The long pebbly sweep of **Bossington Beach** (above, seen from Selworthy Beacon)

- The thatched cottages and medieval church in **Selworthy**

- The panoramic views from **Dunkery Beacon** – Exmoor's highest point

- **Horner Wood**, one of the largest ancient woodlands left in Britain – amazing for bats and other wildlife

Lunch or munch Tasty treats for weary explorers at the Periwinkle Cottage tea-room and garden in Selworthy. Have a barbecue in the picnic field at Bossington car park.

Young explorers Spot red deer and buzzards at Webber's Post. Plenty of space to have your own wild adventure.

Walkies? Dogs welcome.

📍 Nr Porlock and Minehead. To start exploring, head for the National Trust car parks at Selworthy (TA24 8TP), Horner Wood (TA24 8HY), Bossington (TA24 8HF) or Webber's Post (TA24 8TB).
☎ 01643 862452

3 TOP SPOTS... for a cream tea

- 1 By the river at Dunster Watermill
- 8 On the south lawn at Barrington Court
- 18 In the secluded tea-garden at Dyrham Park

Nearby... On the Devon side of Exmoor



3 Arlington Court

A house filled with travellers' treasures, and a museum exploring 19th-century travel, set in a historic wooded estate.

Price guide £13.60. Reduced rates for museum and grounds only.

Open days Every day, 16 Feb-27 Oct, plus some winter opening. Grounds open all year. Call or go online for times and full details.

☞ Nr Barnstaple EX31 4LP
☎ 01271 850296

4

Coleridge Cottage

The Romantic poet Samuel Taylor Coleridge lived in this humble cottage, brought to life today as a 'hands-on' re-creation of his world.

Don't miss

- Relaxing with a book in the reading room, or listening to poetry in the garden
- Drawing water from the 18th-century well

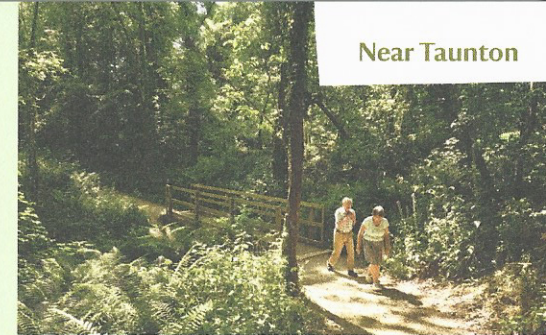
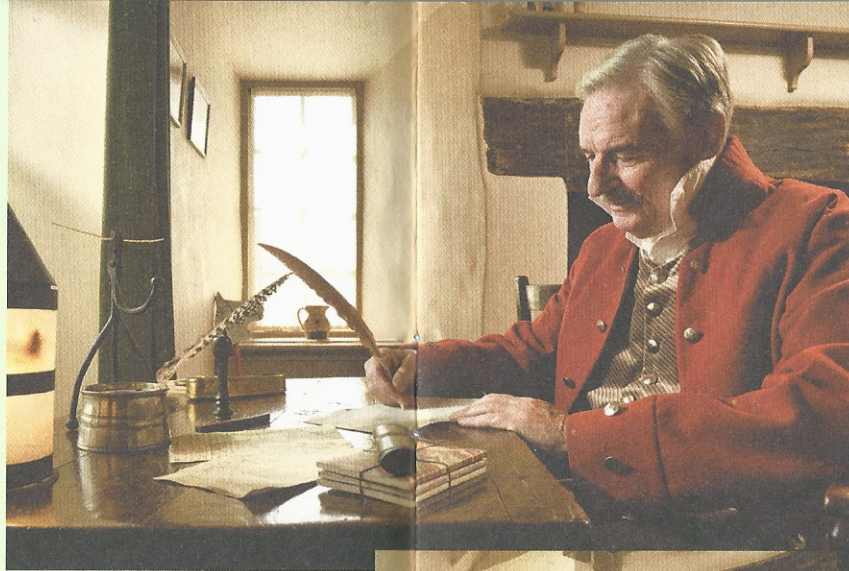
Lunch or munch Light refreshments in the Courtyard tea-room.

Young explorers Mouse hunt, dressing up in Georgian clothes, writing with a quill, lots of hands-on activities.

☞ Nr Bridgwater TAS 1NQ
☎ 01278 732662

Price guide £7.80

Open days Every day, 2 Mar-3 Nov, plus some Dec weekends. Call or go online for times and full details.



Near Taunton

5 Fyne Court

The ultimate lost garden, a wilderness and wildlife haven with old boathouse and folly, walled garden, woods and meadows to play in and explore.

Don't miss

- Carpets of snowdrops in late winter
- Walking up nearby Broomfield Hill to survey the southern Quantocks

Lunch or munch Courtyard tea-room open seasonally (check web for details). Picnic in the folly.

Young explorers Play trail and family trail, tree climbing and den building, events including activities in school holidays.

Walkies? Dogs welcome.

☞ Nr Bridgwater TAS 2EQ
☎ 01823 451587

6 Wellington Monument

The tallest three-sided obelisk in the world (left), built to honour the Duke of Wellington, stands high on the edge of the Blackdown Hills surrounded by woods.

Young explorers Picnicking, kite-flying, hide and seek.

☞ Nr Wellington TA21 9PB
☎ 01823 451587

7

Montacute House

Once seen, never forgotten: the first glimpse of this golden Elizabethan masterpiece, glittering with windows and bristling with chimneys, is breathtaking.

Don't miss

- 'Elizabeth of Bohemia: The Winter Queen': an exhibition in partnership with the National Portrait Gallery
- The fabulous Goodhart collection of needlework samplers on display in a special room
- Rose borders and wobbly yew hedges in the garden

Lunch or munch Courtyard Café for seasonal treats.

Young explorers Hidden swings, family trails and activities.

Walkies? Dogs welcome in garden and parkland.



📍 Nr Yeovil TA15 6XP
☎ 01935 823289

Price guide £15.30

Open days Every day, except 24-25 Dec. Call or go online for times and full details.

8

Barrington Court

An atmospheric fragment of old Somerset: an empty Tudor manor house, beautifully restored in the 1920s, farm buildings, abundant flowers and orchards.

Don't miss

- Barrington's homemade cider and apple juice
- Artisan workshops in the old farm buildings

Lunch or munch Strode dining and tea rooms for homemade cakes, and main meals with ingredients often grown in the kitchen garden.

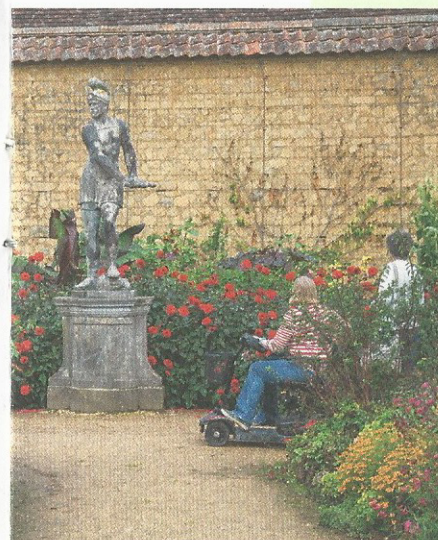
Young explorers Plenty of outdoor space to enjoy with family trails and activities.

Walkies? Dogs welcome in parts of the estate.

📍 Nr Ilminster TA19 ONQ
☎ 01460 241938

Price guide £15.30
Reduced rates in winter.

Open days Every day, 18 Feb-3 Nov, plus winter opening. Call or go online for times and full details.



9

Tintinhull Garden

Secluded and harmonious, this exquisite garden was the vision of one remarkable woman: Phyllis Reiss.

Don't miss

- The garden 'rooms', each with their own character
- The kitchen garden and working orchard

Lunch or munch Hot and cold drinks, cakes and nibbles.



📍 Nr Yeovil BA22 8PZ
☎ 01458 224471

Price guide £7.90

Open days Every day, 30 Mar-29 Sep. Call or go online for times and full details.

10

Lytes Cary Manor

This intimate medieval house, once the home of a Tudor herbalist, was lovingly restored in the early 20th century, when its magical garden was created.

Don't miss

- The Twelve Apostles topiary leading to the house gates
- The chance to stay in part of the house: nationaltrustholidays.org.uk

Lunch or munch Light refreshments.

Young explorers Croquet lawn, natural play area.

Walkies? Dogs welcome on estate walks.

📍 Nr Somerton TA11 7HU
☎ 01458 224471

Price guide £12.65

Open days Every day, 2 Mar-3 Nov. Estate walks open all year. Call or go online for times and full details.

11 Cheddar Gorge

England's largest gorge, a spectacular limestone canyon 400ft deep and 3 miles long, with sheer cliffs and abundant wildlife. National Trust shop and information centre.

📍 Nr Cheddar BS27 3QE
☎ 01278 751874

12 Sand Point

A long grassy headland reaching far into the Bristol Channel, with great views all round and plenty of space for walking, kite-flying and picnicking.

📍 Nr Weston-super-Mare BS22 9UD
☎ 01278 751874

13 Brean Down

Jutting into the Bristol Channel, this 'natural pier' has huge views, masses of history and archaeology, a sandy beach with rock pools, abundant birds and flowers.

Don't miss

- Walking right out to the Victorian fort

Lunch or munch Cove Café open from breakfast onwards; ice creams in the shop (both open throughout the year). Picnics welcome.

Young explorers Events throughout the year. Beach games for sale in shop.

Walkies? Dogs welcome.

📍 Nr Weston-super-Mare TA8 2RS
☎ 01278 751874



14 Tyntesfield

A spectacular and rare survivor: this is a near-complete Victorian Gothic country house and estate with the possessions amassed by one family. It's a stage-set for telling the story of why and how a close-knit Victorian family created this delightful retreat. Each ingredient of the estate, each possession, tells us something about the Gibbs family, their estate workers and the world that created Tyntesfield.



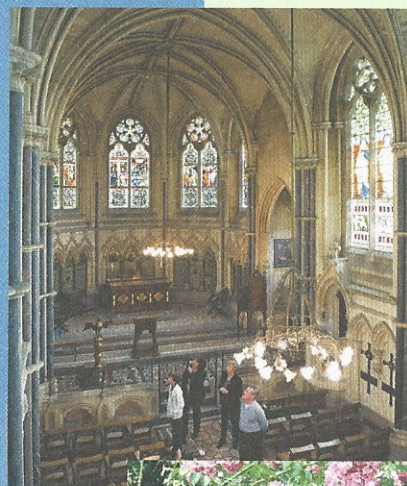
Don't miss

■ The magnificent private chapel (above right) – one of the glories of Tyntesfield

■ This year, we're uncovering the journey of Tyntesfield's founder, William Gibbs, from his birth in Madrid to a family home in the Somerset countryside

■ Free guided estate tours available throughout the year (check times on arrival)

Lunch or munch Cow Barn restaurant serves food grown on the estate. Free wifi. In the garden you'll find the Pavilion Café.



Young explorers Four great play areas, both indoor and outdoor. Plenty of space to let off steam. Lots of hands-on activities plus family events including living history, theatre and workshops.

Walkies? Dogs welcome, with seasonal restrictions.

📍 Wraxall BS48 1NX

☎ 0344 800 4966 (infoline)/01275 461900

Price guide £18.40. Reduced rates for garden and estate only.

Open days Every day all year, except 25 Dec. Call or go online for times and full details.

15

Leigh Woods

A tranquil wilderness on the edge of Bristol, with woodland adventures, wildlife, Iron Age fort and views over the Avon Gorge and suspension bridge.



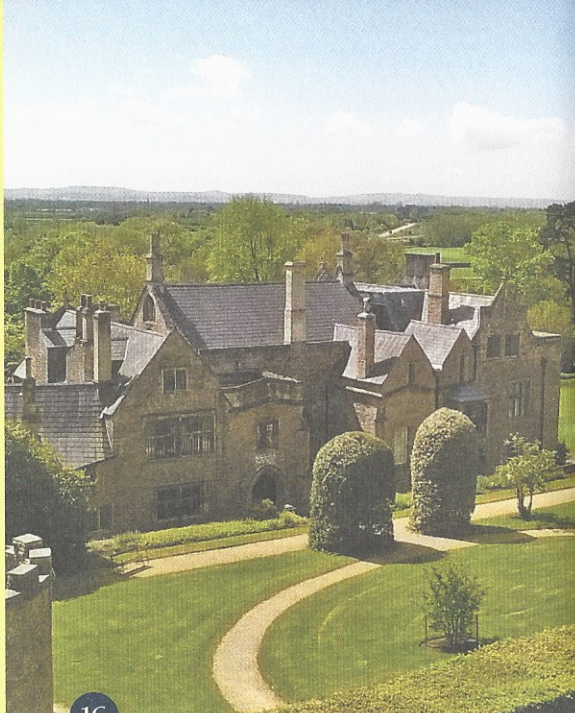
Lunch or munch Picnics welcome.

Young explorers Heaven for explorers of all ages: network of paths (including easy-access trail), mountain bike trail and Sustrans cycling route, natural play trail, orienteering course.

Walkies? Dogs welcome (under close control when cattle grazing).

➔ BS8 3PZ*
☎ 0117 973 1645

***Disabled parking only at Trust office. Use nearby car parks, or public transport from Bristol.**



16

Clevedon Court

A remarkable survivor from medieval times, this manor house, set in a terraced garden, has been the much-loved home of the Elton family since 1709.

Don't miss

■ Collections of Nailsea glass and Elton Ware pottery

Lunch or munch Kiosk serving cream teas and drinks.

Young explorers Family guide and children's quiz.

➔ Clevedon BS21 6QU
☎ 01275 872257

Price guide £10. Reduced rates for garden only.

Open days Wednesday, Thursday and Sunday afternoons, 3 Apr-29 Sep, plus Bank Holiday Mondays. Call or go online for times and full details.



17

Prior Park Landscape Garden

A place created to lift the spirits, a beautiful man-made landscape shaped to blend harmoniously with its natural setting and to give fabulous views over Bath.

Don't miss

■ A chance to see conservation in action as the Georgian dams are restored

■ Winding paths leading to hidden retreats, a grotto, cascades and lakes

■ The graceful Palladian bridge, one of only four of its kind in the world (spot the historic graffiti)

Lunch or munch Tea Shed for light refreshment, picnics welcome.

Young explorers Natural play area, new construction-themed play area during restoration works, seasonal trails.



Walkies? Dogs welcome.

➔ Nr Bath BA2 5AH*
☎ 01225 833977

Price guide £8.40

Open days Every day, 1 Feb-1 Nov, plus winter weekends. Call or go online for times and full details. **Access to some areas may be restricted due to conservation project.**

***Prior Park is a green tourism site, with car parking only for disabled visitors. You can walk here from city centre (1 mile, uphill) or catch frequent buses from railway station, Abbey and Dorchester Street (by bus station).**

18 Dyrham Park

Tucked deep into the folds of an ancient deer park is a golden 17th-century house. The garden is being developed with sumptuous planting, while the house interior will also evolve as we explore new ways of revealing the story of the intriguing William Blathwayt.

Don't miss

- The herd of fallow deer – from fawning season in June to rutting season in October
- Ancient ponds, flower borders and a perry pear orchard
- A collection of 17th-century furniture, paintings and Delftware
- Whitefield wildflower meadow blooming in June

Lunch or munch Tea-room, with outdoor seating in tea garden, also takeaway kiosk on busy days and in summer serving ice creams and snacks. Picnics welcome.

Young explorers 'A Journey of Discovery' family trail through the park. Children's play area at Old Lodge, family events, tracker packs and nature trails.



📍 Nr Bath SN14 8HY*
☎ 0117 937 2501

Price guide £15

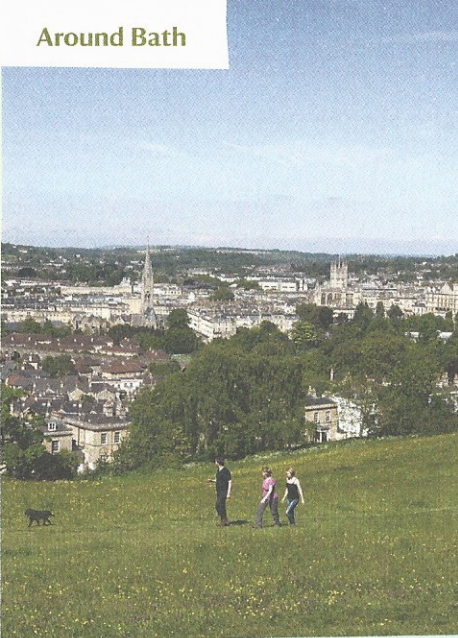
Open days Every day all year, except 24-25 Dec and some Wednesday mornings in Sep, Nov and Dec. Call or go online for full details.

*enter via A46



3 TOP SPOTS... for orchards

- 8 Barrington Court, for apple blossom, apple days and cider
- 14 Tyntesfield, where apples, pears, mulberries, walnuts, damsons and quinces grow
- 10 Lytes Cary Manor, where you can help yourself to an apple in autumn



19 Bath Skyline

One of Bath's unique attractions is that it's surrounded by wildlife-rich meadows and wooded hillsides where you can walk and relax with grandstand views over the World Heritage cityscape. There's a 6-mile Bath Skyline waymarked walk, plus shorter routes to follow from the city centre. Download the walk route from the website, or pick up a leaflet from Prior Park or Bath tourist information.

Young explorers Fairy trail, woodland play area at Claverton Down, guided walks, geocaching trail, children's events.

Walkies? Dogs welcome.

☞ Nr Bath
☎ 01225 833977

Nearby... in Wiltshire

20 Westwood Manor

Small manor house, little changed since 1650 and still a family home today, with decorative plasterwork and period furniture.

☞ Nr Bradford-on-Avon BA15 2AF
☎ 01225 863374

Price guide £8.50

Open days Tuesday, Wednesday and Sunday afternoons, 2 Apr-29 Sep. Call or go online for times and full details.

21 Great Chalfield Manor

Guided tours of this moated medieval house, still a family home, set in beautiful surroundings with a romantic garden of ponds, roses and topiary houses.

☞ Nr Melksham SN12 8NH
☎ 01225 782239

Price guide £10.60. Reduced rates for garden only.

Open days Tuesdays, Wednesdays, Thursdays and Sundays, 2 Apr-31 Oct. Call or go online for times and full details.

22 The Courts Garden

A classically peaceful English country garden with herbaceous borders, quirky topiary, water gardens and an arboretum.

☞ Nr Bradford-on-Avon BA14 6RR
☎ 01225 782875

Price guide £10

Open days Every day except Wednesdays, 25 Feb-3 Nov, plus weekends from 2 Feb. Call or go online for times and full details.

23 Lacock

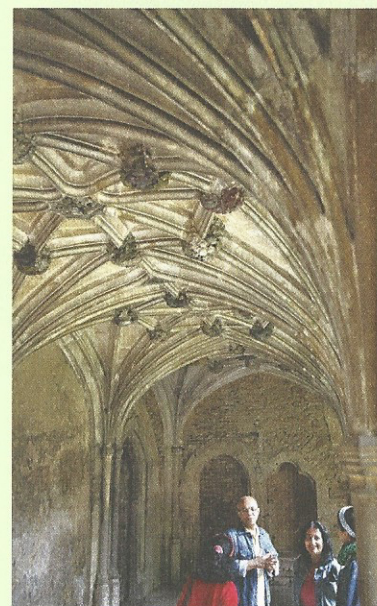
There's so much here, you'll need a full day: abbey revealing 800 years of history and change, picturesque village often used as a film location, museum celebrating the birth of photography.

Lunch or munch The Stables café and Courtyard tea-room. Plenty of options in the village. Picnics welcome in the abbey grounds.

☞ Nr Chippenham SN15 2LG
☎ 01249 730459

Price guide £16. Free entry to village.

Open days Every day, all year except 25-26 Dec and 1 Jan. Abbey rooms open 16 Feb-3 Nov, plus some winter opening. Call or go online for times and full details.



24 Stourhead

One of the world's great landscape gardens, a sublime man-made creation of reflective water, woods, temples, trees and grottoes. The classical house has magnificent paintings and furniture.

☞ Nr Mere BA12 6QF
☎ 01747 841152

Price guide £19.50. Free entry to restaurant and shop.

Open days Every day, all year except 25 Dec. House open 9 Mar-10 Nov, plus some winter opening. Call or go online for times and full details.

